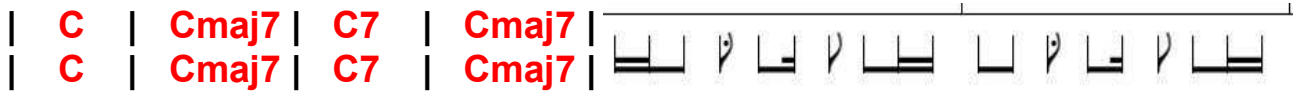


# Kiss Me – SIXPENCE NONE THE RICHER **Capo 3**

Key : C, 100 Bpm

## Intro:



## Couplet 1:

| C | Cmaj7 | C7 | Cmaj7 |  
 Kiss me out of the bearded barley  
 | Cmaj7 | C7 |

Nightly, beside the green, green grass  
 | Cmaj7 | C7 |

Swing, swing, swing the spinning step  
 | C7 | F |  
 You wear those shoes and I will wear that dress

## Chorus:

| Dm G | C Am |  
 Oh, kiss me.. beneath the milky twilight

| Am G | C C7 |  
 Lead me .... out on the moonlit floor

| Dm G |  
 Lift your open hand

| C C7 | Am G | F |  
 Strike up the band, make the fireflies dance, silver moon's sparkling

| G Gsus G |  
 .....So kiss me

| C | Cmaj7 | C7 | Cmaj7 |  
 | C | Cmaj7 | C7 | Cmaj7 |

## Couplet 2:

| C | Cmaj7 | C7 |  
 Kiss me down by the broken tree house

| Cmaj7 | C7 |  
 Swing me upon its hanging tire

| Cmaj7 | C7 |  
 Bring, bring, bring your flowered hat

| F |  
 We'll take the trail marked on your father's map

Chorus:

| **Dm G** | | **C Am** |

Oh, kiss me.. beneath the milky twilight

| **Am G** | | **C C7** |

Lead me .... out on the moonlit floor

| **Dm G** |

Lift your open hand

| **C C7** | | **Am G** | | **F** |

Strike up the band, make the fireflies dance, silver moon's sparkling

| **G Gsus G** |

.....So kiss me

| **C** | | **Cmaj7** | | **C7** | | **Cmaj7** |

| **Dm G** | | **C Am** |

| **Dm G** | | **C Cmaj7** |

Chorus:

| **Dm G** | | **C Am** |

Oh, kiss me.. beneath the milky twilight

| **Am G** | | **C C7** |

Lead me .... out on the moonlit floor

| **Dm G** |

Lift your open hand

| **C C7** | | **Am G** | | **F** |

Strike up the band, make the fireflies dance, silver moon's sparkling

| **G Gsus G** |

.....So kiss me

| **C** | | **Cmaj7** | | **C7** | | **Cmaj7** |

| **C** | | **Cmaj7** | | **C7** | | **Cmaj7** |

| **C** | | **Cmaj7** | | **C7** | | **Cmaj7** |

| **C** | | **Cmaj7** | | **C7** | | **Cmaj7** |

**C**